

estate agents **auctioneers**



Top Floor Flat, 2 Gloucester Street, Clifton, Bristol, BS8 4JF
£320,000

A charming two double bedroom period apartment situated in the heart of Clifton Village,

The Property

Location

Clifton Village is one of the most unique and sought after locations in the City. From its very early days as a Spa destination to the later Georgian and Victorian influences Clifton offers charm at every turn from the fine sweep of Royal York Crescent to the grandeur of Victoria Square. At its heart lies the picturesque "Village" offering an eclectic range of independent shops, boutiques, cafes, bars and restaurants including Cote, The Ivy and the Avon Gorge Hotel. The Downs offers four hundred acres of green public space whilst Brunel's Clifton Suspension Bridge provides a gateway to the Ashton Court Estate with its woodlands, mountain bike trails and walks whilst there is excellent access to the exciting Harbourside district, the City Centre and Temple Meads.

Other Information

Leasehold: Residue of 999 years

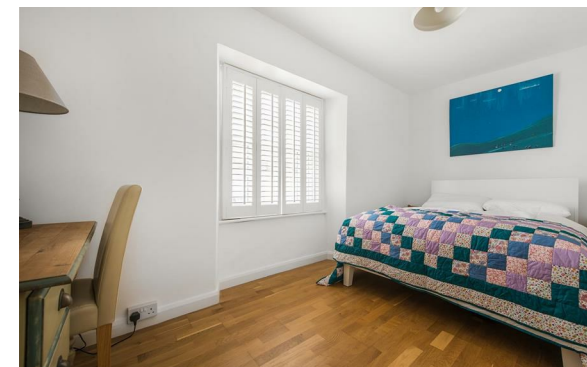
Management fee: £50 pcm

Ground rent: N/A

The Freehold belongs to the management company which is run by the owners of the flats in the building.

Please Note

Hollis Morgan endeavour to make our sales details clear, accurate and reliable in line with the Consumer Protection from Unfair Trading Regulations 2008 but they should not be relied on as statements or representations of fact and they do not constitute any part of an offer or contract. All Hollis Morgan references to planning, tenants, boundaries, potential development, tenure etc is to be superseded by the information provided in your solicitors enquiries. It should not be assumed that this property has all the necessary Planning, Building Regulation or other consents. Any services, appliances and heating system(s) listed may not been checked or tested and you should rely on your own investigations. The seller does not make any representation or give any warranty in relation to the property and we have no authority to do so on behalf of the seller. Please note that in some instances the photographs may have been taken using a wide angle lens.



hollis
morgan
